



Shenzhen Lamp Lighting Electronic Co., Ltd

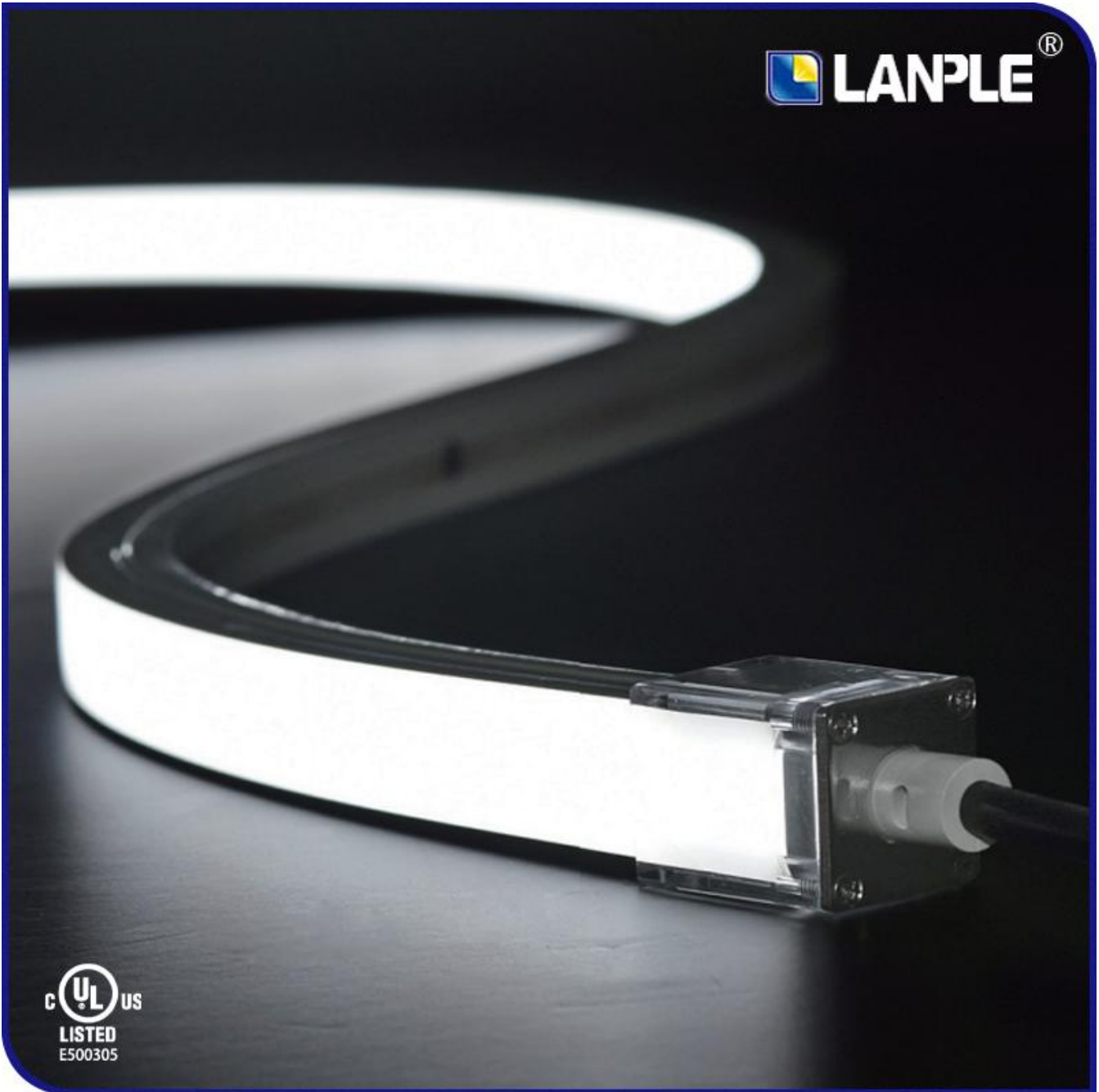
Tel: +86-755 25699250 Fax : +86-755 25699582

E-mail: sales@lanplelit.com http://www.lanplelit.com

2F,Bld.3rd, Wanjun Sci-Tech Park, #14 Chuangye Rd., Bao'an Dist., Shenzhen, 518108, China

SILICONE NEON STRIP

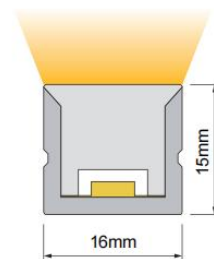
Item No.: LL-NL1615 SERIES



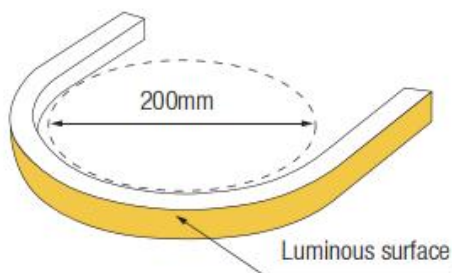
Note:

- 1.This file will be regarded as product specification as well as technical references if just holding by one side.
2. Product standard will be executed according to this file, which already confirmed and signed by both sides.
3. The final power of interpretation regarding the file belongs to LANPLE All rights reserved.

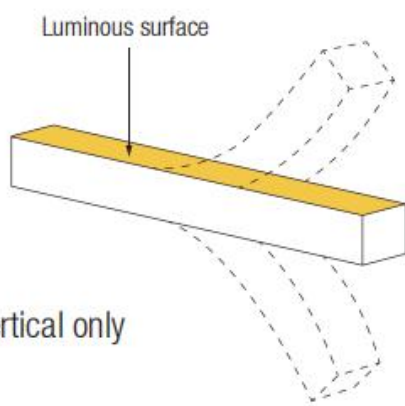
Drawing:



Across section
size's picture



Min bending diameter



Bend vertical only



Horizontal
Bending



Vertical
Bending



Only One Bin



3-Step
MacAdam



UV Protection



Resistant
to solvents



IP67

Waterproof
Grade



LM80

LM80 Standard



Resistant
Saltwater

- Size unit for mm.
- The tolerance of length is +/- 0.2mm.
- The tolerance of width is +/- 0.2mm.
- The tolerance of thickness is +/- 0.1mm.



Product Features:

- ◎High light transmittance, environmental protection grade silicone material, integrated extrusion molding process.
- ◎Unique optical light distribution structure design, uniform lighting surface and no shadow.
- ◎IP67 protection level, salt solution resistance, acids & alkalis, corrosive gases, fire and UV
- ◎ Excellent toughness, simple and stylish appearance, delicate and unique
- ◎3 years warranty, working life ≥ 30000 hours.

Product Parameters:

| | |
|-------------------------|--------------------------------|
| Forward Voltage DC | 24V DC |
| Color | 3000K,4000K,6000K |
| Power | 5w/m,10w/m, 15w/m |
| Efficacy@4000K | 58.8 lm/w |
| CRI | >90 |
| LED PIN Temperature | Max. 65°C |
| Storage Temperature | -25°C ~ 60°C |
| Ambient Temperature | Min.-25°C, Max (Table below) |
| Cut size | 50mm |
| Max Ambient Temperature | 55°C |
| IP Grade | IP67 |

Various Connections:

Use three kinds of entry cable, to meet the different installing request

Integral plug

Combined end cap

Silicone end cap

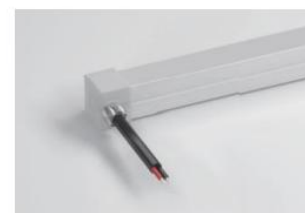
Front Cable Entry:

The cable could be hidden in all directions by the flexible design.



Side Cable Entry:

The cable could be perfectly hidden to achieve seamless light connection.

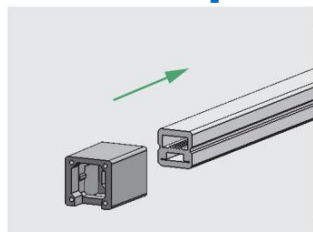


Bottom Cable Entry:

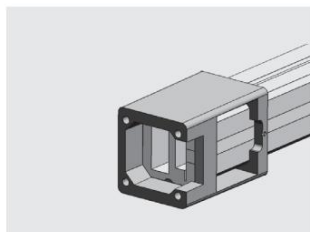
The cable could be perfectly hidden to achieve seamless light connection.



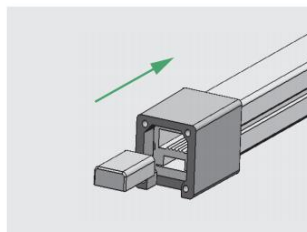
End Cap's Fast Installation Process:



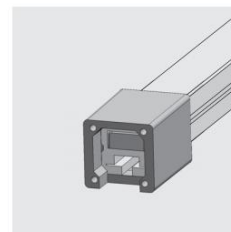
Insert the transparent PC shell into the led strip, insert in to the limit.



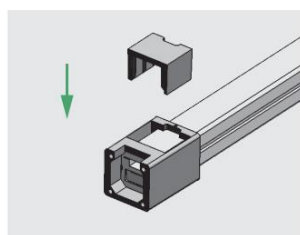
Its window is at the bottom of the led strips for all the front cable entry, side cable entry and bottom cable entry



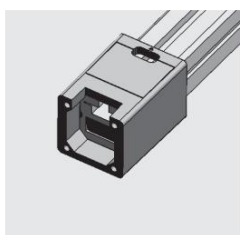
Stuff the plug into the holes corresponding to the led strip



Effect diagram of the finished assembly



Insert the stopper into the PC shell



Effect diagram of the stopper assembly completed

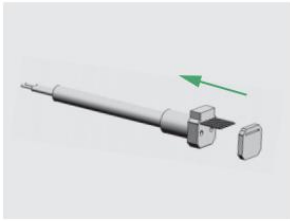


Shenzhen Lamp Lighting Electronic Co., Ltd

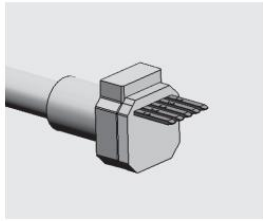
Tel: +86-755 25699250 Fax : +86-755 25699582

E-mail: sales@lanplelit.com <http://www.lanplelit.com>

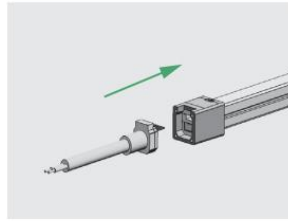
2F,Bld.3rd, Wanjun Sci-Tech Park, #14 Chuangye Rd., Bao'an Dist., Shenzhen, 518108, China



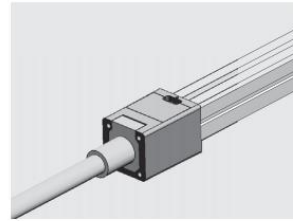
Put the waterproof washer into the plug



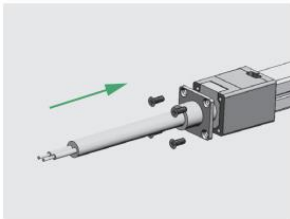
Effect diagram of the waterproof washer assembly completed



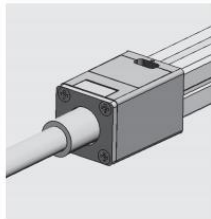
Insert the plug with the waterproof washer into the led strip, and the Pin insert between FPC and transparent PET.



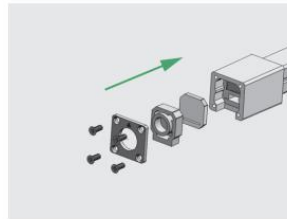
Effect diagram of the plug finished assembly assembly completed



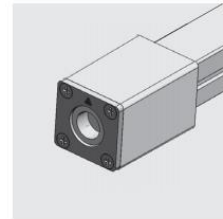
Fix the hardware on the PC shell with 4pcs screws, close to the PC shell, completed assembly



Effect diagram of the metal plate assembly completed



End cap's installation diagram



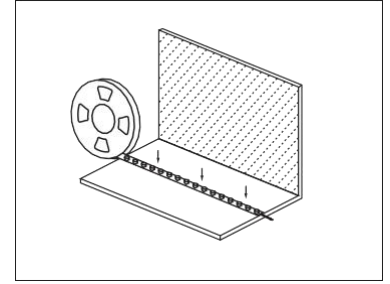
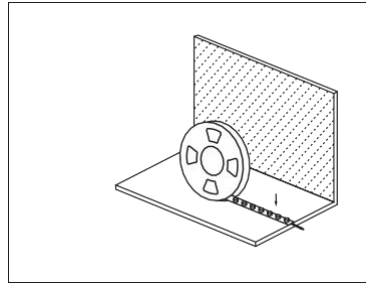
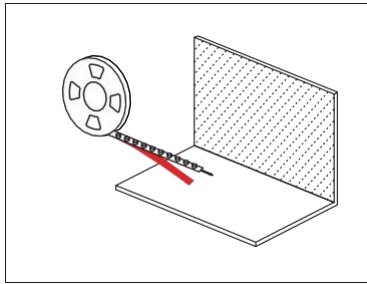
Effect diagram of the metal plate assembly completed

Product Applications

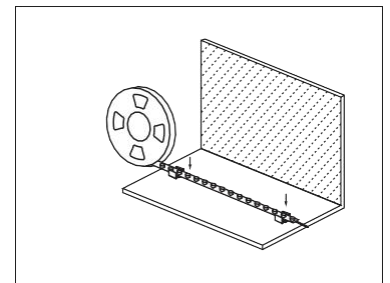
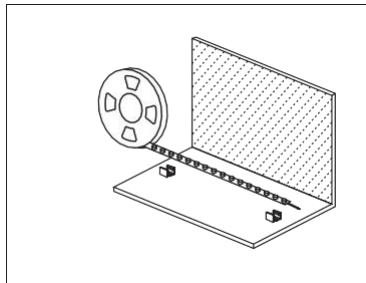
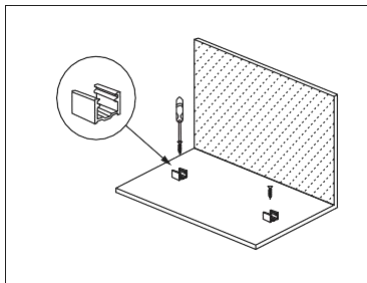


Installation Diagram:

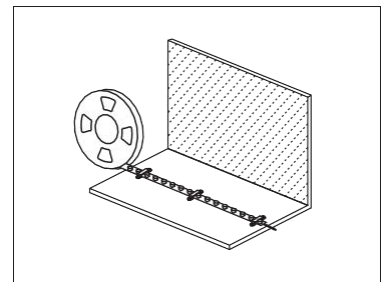
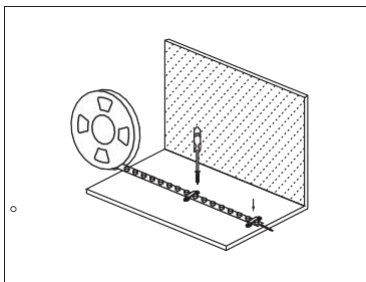
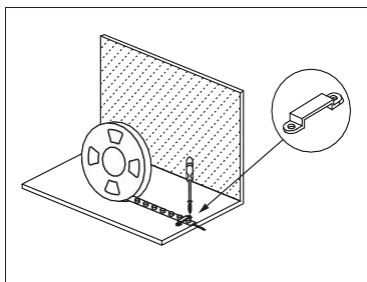
Backglue
installation



Card button
installation

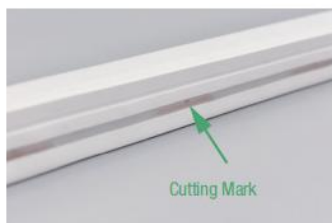


Installation
of silicone
card buckle

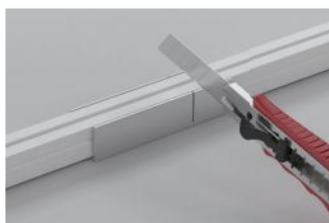


Cautions:

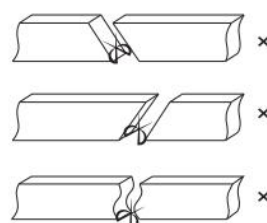
When installing the led bar, note the installation technology. The lead band can bend. But not distorted. As shown in the figure below:



Remark: The bottom of the led strip has transparent window, the black marker is the cutting position



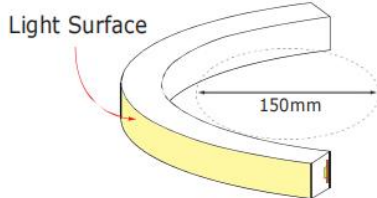
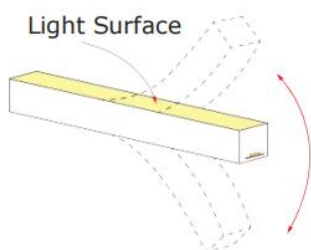
Use a cutting jig, vertical cutting precisely in the exact cutting position of led strip.



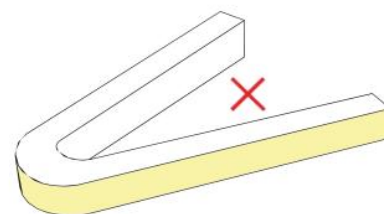
Please don't be feel free to cut and cut into an oblique angle or cambered section. Please don't be feel free to cut and cut into an oblique angle or cambered section.

The LED neon Flex can be only bend along the light surface, like the following drawing;

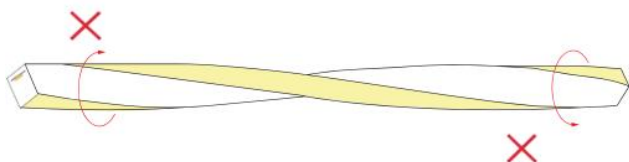
Do not twist the light, and do not bend sm aller than the allowed minimum 150mm bending diam eter;



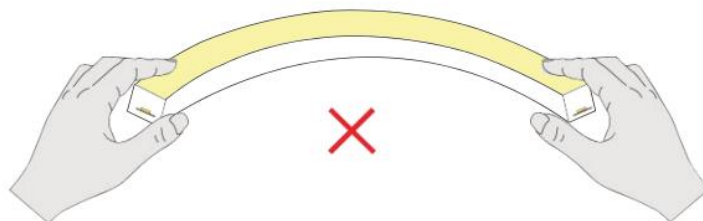
Bend vertical only



✗ Bend too tight



✗ Do not twist this LED Neon Flex! Otherwise LED & Resistor & internal circuit will be broken.



✗ Do not bending the LED Neon Flex horizontally Otherwise LED & Resistor will be broken.